

## Price

---

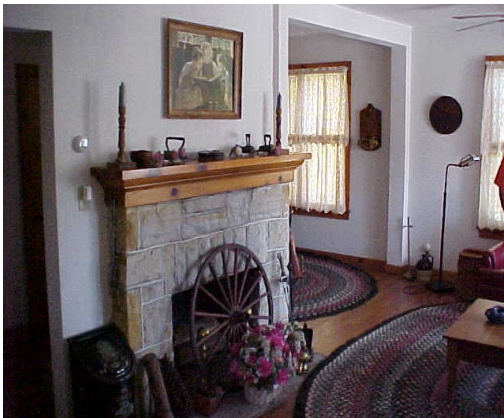
This facility is made available without charge year round (except during the days of the summer camp meeting).

*Contributions to the operating budget of the cottage will be gladly received but are not expected.*

## History

---

This cottage was built in the early 1960's by and for the use of the Rev. H. J. Sutton and his family. It was recently made available to the WPA District of The C&MA fully furnished and at a reduced price.



## Pastoral Chaplains

---

### Southeast Quadrant

Rev. William Hazlett

814-736-4032

### Southwest Quadrant

Rev. William P. Wood,

Chaplain Coordinator

724-863-5179

### Northwest Quadrant

Rev. Edwin A. Dixon

814-786-7669

### Northeast Quadrant

Rev. Bernard J. Knefley

814-274-8661

*Contact your chaplain to apply for use of the Sutton/Ulrich Cottage.*

## The Sutton/Ulrich Cottage

---

#105  
1651 Mahaffey Grampian Highway  
Mahaffey, PA 15757



## The Sutton/Ulrich

## Cottage

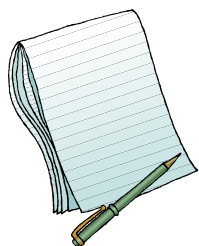
**The purpose of the cottage is to provide a safe haven for official workers and their families who reside in and are a part of the Western PA District of the C&MA and who may need a place apart for rest, study, prayer and in general for one's personal pursuit of God.**



**Use of the cottage has been placed under the oversight of the District Chaplains in conjunction with the District Superintendent for the use of the district as a personal retreat center for pastors.**

# The Sutton/Ulrich Cottage—a safe haven for official workers

## Process for Approval to Use



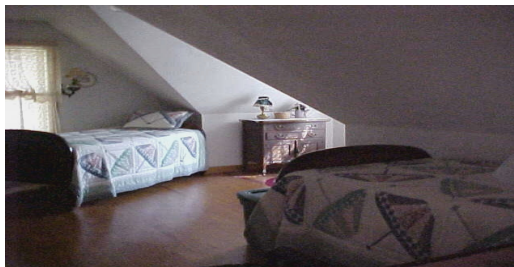
Use of the cottage will be on a “first come, first served basis.” A calendar will be maintained by a designated chaplain. Application for use should be made through your quadrant chaplain who will confer with the designated chaplain. The dates and time of occupancy will then be confirmed in writing and your code for the door lock given.

## Preparation

The cottage will be cleaned and maintained by the District. Table service, kitchen utensils, an iron and ironing board, etc., are provided. Each occupant should provide his own food, linens, wash cloths and towels, comfortable, casual clothing, personal effects, and medical supplies as needed.



suitable for the climate, personal effects, and medical supplies as needed.



The cottage has central heating and air conditioning. There is a complete bathroom including shower, sink and toilet. At present, the second floor though furnished is an open room that comfortably accommodates four people with one double and two single beds. The first floor has a small but complete kitchen, dining area, living room with an operating fireplace, plus a sitting room or study off to one side. Though the building has a complete basement, it is not for general use by occupants. Parking space for two vehicles is available adjacent to the cottage.

## Property Care

Please care for the cottage as you would your own home and be considerate of the next ones to use the cottage.

We understand that accidents may happen or items may wear out. You may help with the upkeep of this cottage by filling out the maintenance form provided and taking it to the Mahaffey Camp Office.

*The occupant is personally responsible for damages which occur during his/her stay.*

## Prohibitions

The number of occupants at one time is limited to the nuclear family.



*Pets are not permitted.*

The cottage is fully furnished and contains many keepsakes and reminders of bygone days and people. These furnishings are the exclusive property of the WPA District of The C&MA and are for the enjoyment of those using the facility. They are not for sale, may not be borrowed or removed from the premises by anyone for any reason at any time. Removal by anyone will be considered theft.

## Entering the premises

A coded electronic lock has been installed on the front door, the code for which will be issued in writing on the confirmation form provided and will be changed after each occupancy.



## The Sutton/Ulrich Cottage

#105  
1651 Mahaffey Grampian Highway  
Mahaffey, PA 15757